

### Medium-size Battery

#### MHB MM Series—Medium-size Battery

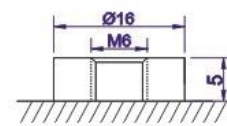
- High performance, completely maintenance-free, low self-discharge
- 100% precise quality testing, stable quality and high reliable performance
- Unique grid alloy formula and updated manufacturing technique
- Floating & standby use: up to 8 years
- Cycle use 1: Up to 260 cycles at 100% DOD
- Cycle use 2: Up to 500 cycles at 50% DOD

#### Application:

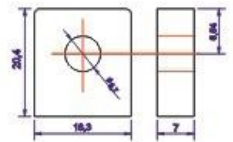
- Telecommunications
- Uninterruptable Power Supply (UPS)
- Electric Power System (EPS)
- Emergency backup power supply
- Alarm and security system
- Communication power supply
- DC power supply
- Auto control system

#### Construction:

- Component .....Raw material
- Positive .....Lead dioxide
- Negative .....Lead
- Container .....ABS
- Cover .....ABS
- Sealant .....Epoxy
- Safety valve .... Rubber
- Terminal .....Copper/Pb
- Separator .....Fiber glass
- Electrolyte ..... Sulfuric acid



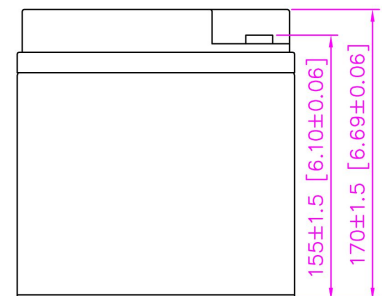
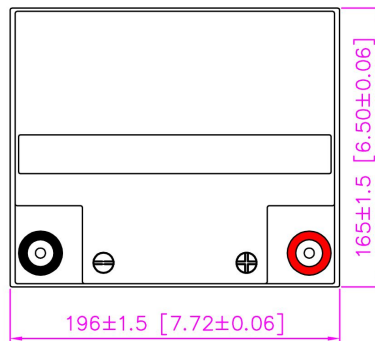
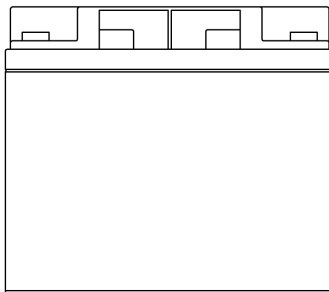
M6 Bolt



M6 Bolt & Nut

B4 Terminal

T11 Terminal

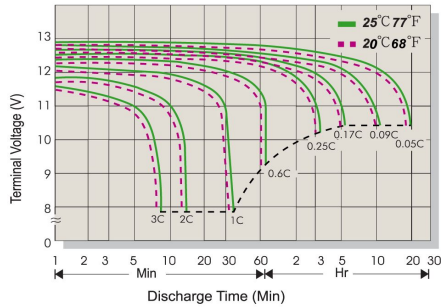


#### Specification:

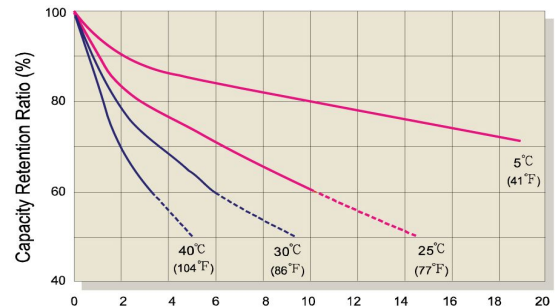
Battery Model	MM 40-12 12V40AH			
Designed Floating Life	Up to 8 Years			
Capacity (25°C)	20HR(2.083A,10.8V)	10HR(4.00A,10.8V)	5HR(7.636A,10.5V)	1HR(25.57A,10.5V)
	41.66AH	40.00AH	38.18AH	25.57AH
Dimensions	Length	Width	Height	Total Height
	196mm (7.72inch)	165mm (6.50inch)	155mm (6.106inch)	170mm (6.69inch)
Approx. Weight	12.80Kg (28.22 lbs) ±5%			
Internal Resistance	Full charged at 25°C: ≤10.0mΩ			
Self Discharge	2% of capacity declined per month at (25°C)			
Capacity Affected by Temp.(20HR)	40°C	25°C	0°C	-15°C
	102%	100%	85%	65%
Charge Voltage(25°C)	Cycle use		Float use	
	14.40-15.00V(-30mV/°C), max. Current:10.0A		13.50-13.80V (-20mV/°C)	

**FUJIAN MINHUA POWER SOURCE CO., LTD.**

### Terminal Voltage (V) and Discharge Time



### Capacity Retention Characteristic



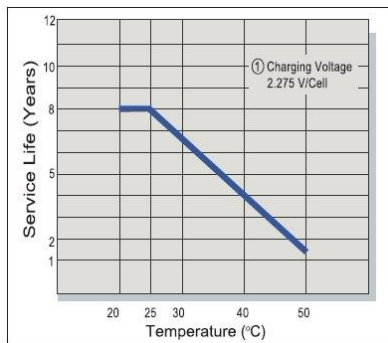
### Battery Voltage and Charge Time for Standby Use



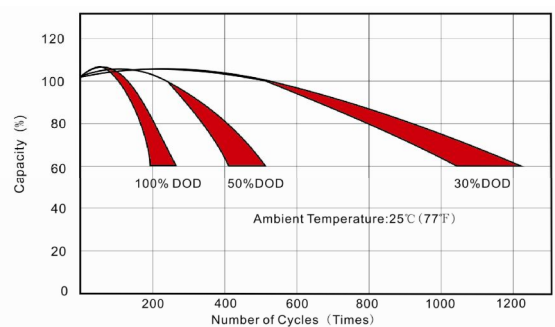
### Battery Voltage and Charge Time for Cycle Use



### Tickle(or Float) Service Life



### Cycle Service Life



### Constant Current Discharge(CC,Unit:A) at 25°C(77°F)

F.V/Time	5Min	10Min	15Min	30Min	1Hr	2Hr	3Hr	4Hr	5Hr	6Hr	10Hr	20Hr
1.85V/Cell	139.51	82.35	64.73	42.19	24.62	14.23	10.93	8.976	7.355	5.996	3.930	2.044
1.80V/Cell	142.17	83.93	65.96	43.00	25.09	14.51	11.14	9.147	7.496	6.111	4.000	2.083
1.75V/Cell	144.84	85.50	67.20	43.80	25.57	14.78	11.35	9.319	7.636	6.225	4.080	2.122
1.70V/Cell	157.87	90.63	71.23	45.55	26.02	15.04	11.55	9.483	7.771	6.335	4.152	2.159
1.67V/Cell	173.81	98.33	77.28	48.10	26.29	15.20	11.67	9.585	7.854	6.403	4.196	2.182

### Constant Power Discharge (CP,Unit:W) at 25°C(77°F)

F.V/Time	5Min	10Min	15Min	30Min	1Hr	2Hr	3Hr	4Hr	5Hr	6Hr	10Hr	20Hr
1.85V/Cell	272.04	160.59	126.22	82.28	48.02	27.76	21.32	17.50	14.34	11.69	7.66	3.98
1.80V/Cell	277.24	163.66	128.63	83.85	48.94	28.29	21.72	17.84	14.62	11.92	7.80	4.06
1.75V/Cell	282.44	166.73	131.04	85.42	49.85	28.82	22.13	18.17	14.89	12.14	7.96	4.14
1.70V/Cell	307.86	176.73	138.90	88.83	50.73	29.33	22.52	18.49	15.15	12.35	8.10	4.21
1.67V/Cell	338.92	191.73	150.70	93.79	51.27	29.64	22.76	18.69	15.32	12.49	8.18	4.26