

#### MHB MM Series—Medium-size Battery

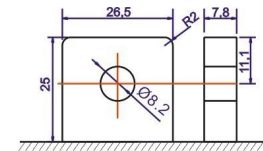
- High performance, completely maintenance-free, low self-discharge
- 100% precise quality testing, stable quality and high reliable performance
- Unique grid alloy formula and updated manufacturing technique
- Floating & standby use: up to 8 years
- Cycle use 1: Up to 260 cycles at 100% DOD
- Cycle use 2: Up to 500 cycles at 50% DOD

#### Application:

- Telecommunications
- Alarm and security system
- Uninterruptable Power Supply (UPS)
- Communication power supply
- Electric Power System (EPS)
- DC power supply
- Emergency backup power supply
- Auto control system

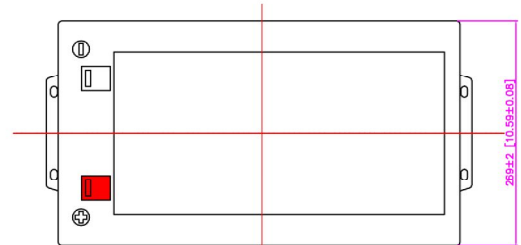
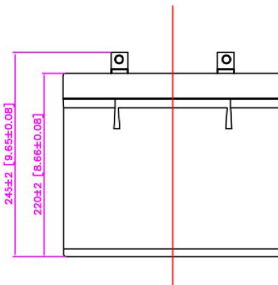
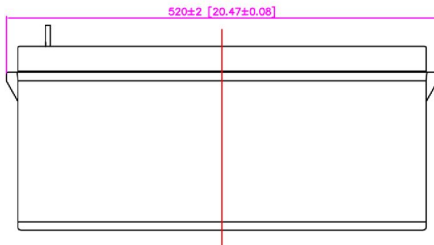
#### Construction:

- Component .....Raw material
- Sealant .....Epoxy
- Positive .....Lead dioxide
- Safety valve .... Rubber
- Negative .....Lead
- Terminal .....Copper/Pb
- Container .....ABS
- Separator .....Fiber glass
- Cover .....ABS
- Electrolyte ..... Sulfuric acid



M8 Bolt & Nut

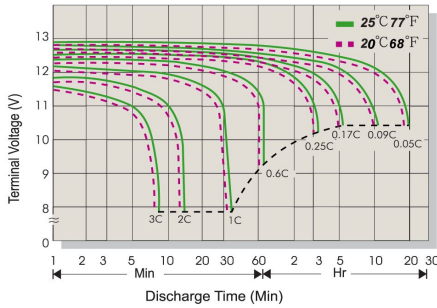
T16 Terminal



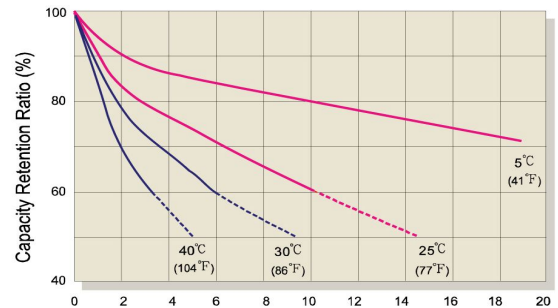
#### Specification:

Battery Model	MM 250-12 12V250AH			
Designed Floating Life	Up to 8 Years			
Capacity (25°C)	20HR(12.5A,10.8V)	10HR(25.0A,10.8V)	5HR(41.1A,10.5V)	1HR(139.1A,10.5V)
	250.0AH	250.0AH	207.5AH	139.1AH
Dimensions	Length	Width	Height	Total Height
	520mm (20.47inch)	269mm (10.59inch)	220mm (8.66inch)	245mm (9.45inch)
Approx. Weight	70.00Kg (154.36 lbs)			
Internal Resistance	Full charged at 25°C: ≤3.5mΩ			
Self Discharge	2% of capacity declined per month at (25°C)			
Capacity Affected by Temp.(20HR)	40°C	25°C	0°C	-15°C
	104%	100%	85%	65%
Charge Voltage(25oC)	Cycle use		Float use	
	14.4-14.6V(-30mV/°C), max. Current:62.50A		13.6-13.8V (-20mV/°C)	

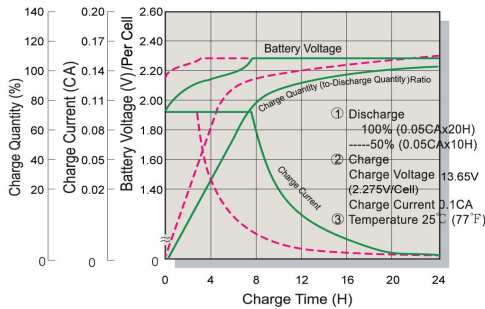
### Terminal Voltage (V) and Discharge Time



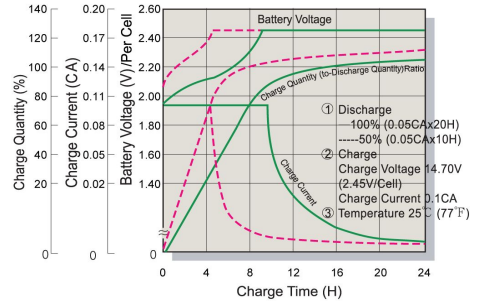
### Capacity Retention Characteristic



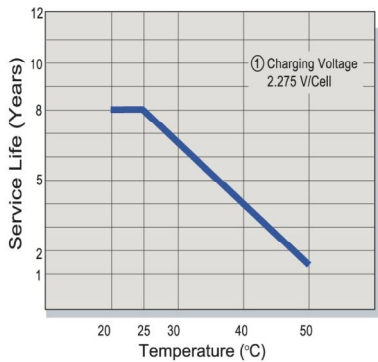
### Battery Voltage and Charge Time for Standby Use



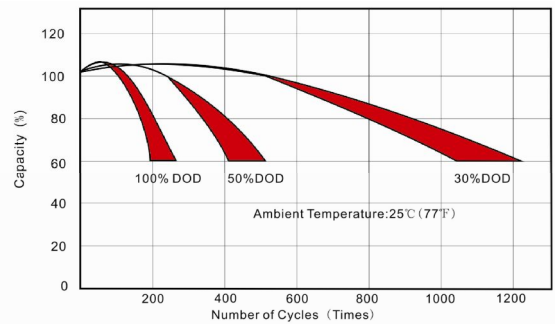
### Battery Voltage and Charge Time for Cycle Use



### Tickle(or Float) Service Life



### Cycle Service Life



### Constant Current Discharge (CC, Unit: A) at 25°C (77°F)

F.V/Time	5Min	10Min	15Min	30Min	1Hr	2Hr	3Hr	4Hr	5Hr	6Hr	10Hr	20Hr
1.85V/Cell	564.9	416.1	361.2	217.9	128.4	75.6	56.4	47.52	39.12	36.00	24.00	12.00
1.80V/Cell	586.5	432.0	375.0	226.3	133.8	78.8	58.8	49.50	40.75	37.50	25.00	12.50
1.75V/Cell	645.2	453.6	393.8	235.3	139.1	81.1	60.5	50.00	41.16	37.88	25.25	12.63
1.70V/Cell	721.4	475.2	412.5	246.6	141.8	82.7	61.7	50.49	41.57	38.25	25.50	12.75
1.67V/Cell	797.6	496.8	431.3	253.4	147.1	85.1	63.5	50.99	41.97	38.63	25.75	12.88

### Constant Power Discharge (CP, Unit: W) at 25°C (77°F)

F.V/Time	5Min	10Min	15Min	30Min	1Hr	2Hr	3Hr	4Hr	5Hr	6Hr	10Hr	20Hr
1.85V/Cell	1073.3	790.6	686.3	414.1	244.0	143.6	107.2	90.29	74.33	68.40	45.60	22.80
1.80V/Cell	1114.4	820.8	712.5	429.9	254.1	149.6	111.6	94.05	77.43	71.25	47.50	23.75
1.75V/Cell	1225.8	861.8	748.1	447.1	264.3	154.1	115.0	94.99	78.20	71.96	47.98	23.99
1.70V/Cell	1370.7	902.9	783.8	468.6	269.4	157.1	117.2	95.93	78.97	72.68	48.45	24.23
1.67V/Cell	1515.5	943.9	819.4	481.5	279.5	161.6	120.6	96.87	79.75	73.39	48.93	24.46